

SMS SUSPENDED CEILING PLATE

SKU: AE060001

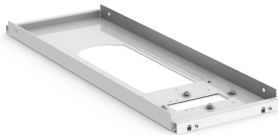
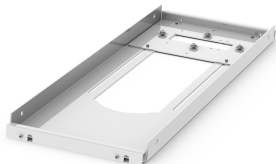


The product fits suspended ceiling bars with measurements 600x600 mm and 600x1200 mm, and you do not have to drill holes in the ceiling. The ceiling plate is attached to the suspended ceiling bars and facilitates a quick installation. The projector mount can be moved approximately 300 mm sideways after installation. For projectors of maximum 20 kg weight.



Max weight 20
Placement Accessory

GALLERY IMAGES



ADDITIONAL INFORMATION

Weight	1 kg
Dimensions	22 × 63 × 5 cm
Color	White

We reserve the right to introduce changes in the product specifications after the printing and publication of this document.

Visit www.smartmediasolutions.com for the most recent information.

SMS Smart Media Solutions AB
Högbergsgatan 26B, 116 20 STOCKHOLM