



## MULTI DISPLAY WALL PILLAR

SKU: N/A

**Please note that this product must be completed with the wall brackets included with the original Multi Display Wall mount.**



The images show the product with wall brackets from the Multi Display Wall mount included.

Using one long mounting rail rather than several small ones allows you to mount SMS Multi Display Wall modules faster, and perfectly aligned.

The long rail has an additional advantage where it is necessary to fix mounting screws in wall beams, since it will cover more beams. This makes it easier to find the locations of a sufficient number of beams for safe mounting.

The product consists of either one rail of length 2000 mm, or two rails of length 2000 mm, on which Multi Display Wall modules are mounted as required.

The rails are made of aluminium and can be cut and combined freely.



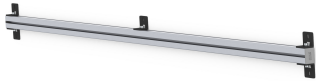
---

**Max weight 100**

**Warranty 5**

**Placement Wall**

GALLERY IMAGES



**VARIATIONS**

<b>SKU</b>	<b>Packaging</b>
PW010016	1x2000 mm
PW010006	2x2000 mm

**ADDITIONAL INFORMATION**

<b>Weight</b>	N/A
<b>Dimensions</b>	N/A
<b>Packaging</b>	1×2000 mm, 2×2000 mm

*We reserve the right to introduce changes in the product specifications after the printing and publication of this document.*

*Visit [www.smartmediasolutions.com](http://www.smartmediasolutions.com) for the most recent information.*

SMS Smart Media Solutions AB  
Högbergsgatan 26B, 116 20 STOCKHOLM