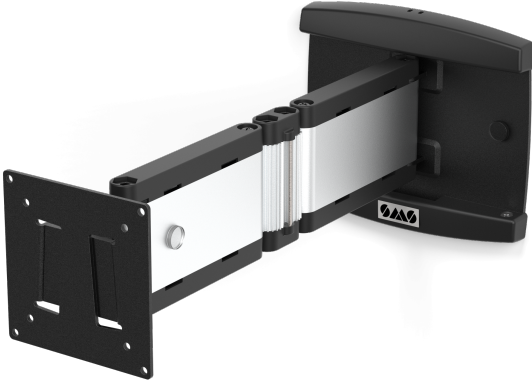




## ICON 3D SMALL

SKU: 14-003-5



The Icon 3D Small is an elegant way to extend the use of your display, regardless of architectural limitations of the room. The 3D arm can be adjusted almost any way you want. This is the smallest and lightest of our 3D arms. Even though we have designed a thin, flat wall bracket it is still very safe and reliable, and carries displays up to 12 kg. The display can be extended as far as 38 centimeters from the wall, or flat against it. Available in Aluminium/Black.

If your display has either VESA 200 x 200 or 200 x 100 mm, complement the installation with the [Icon Small VESA extension](#).



---

**Max weight** 12

**Warranty** 5

**VESA Horizontal** 75 - 100

**VESA Vertical** 75 - 100

**Swivel minus** 90

**Swivel plus** 90

**Placement** Wall

GALLERY IMAGES



**ADDITIONAL INFORMATION**

<b>Weight</b>	2,75 kg
<b>Dimensions</b>	46,5 × 17 × 7 cm
<b>Color</b>	Aluminium/Anthracite Grey, Aluminium/Black

*We reserve the right to introduce changes in the product specifications after the printing and publication of this document.*

*Visit [www.smartmediasolutions.com](http://www.smartmediasolutions.com) for the most recent information.*

SMS Smart Media Solutions AB

Högbergsgatan 26B, 116 20 STOCKHOLM