



EVER STAND 350 MOBILE

SKU: N/A

EVER stand 350

A beautiful and exceptionally versatile stand, suited for medium and large meeting rooms. Use displays up to 86" and 100kg and choose between a motorized or fixed height version of the stand.

Choose between two color options and three types of covers. If you don't find a version that suits you, contact us with a customization request.

With the extent range of accessories you can fit almost any device you like to the stand.



Max weight 100

Warranty 5

Max Screen size Max 86

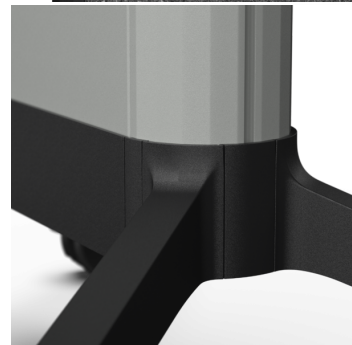
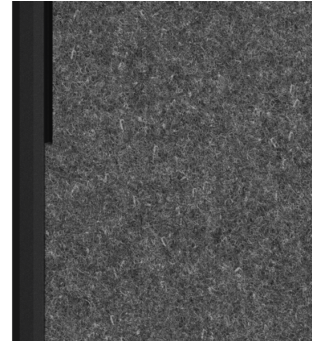
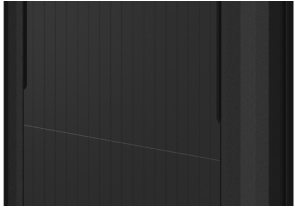
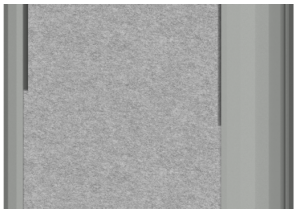
Motorized spec Motorized height adjustment

VESA Horizontal 200 - 600

VESA Vertical 100 - 400

Placement Mobile

GALLERY IMAGES



VARIATIONS

SKU	Color	Motorized	Covers
16-004-9S	Light	No	Soft (PET felt)
16-004-9E	Light	No	Edge (milled MDF)
16-004-9C	Light	No	Clean (aluminum)
16-005-1S-M	Dark	Yes	Soft (PET felt)
16-005-1E-M	Dark	Yes	Edge (milled MDF)
16-005-1C-M	Dark	Yes	Clean (aluminum)
16-004-1S	Dark	No	Soft (PET felt)
16-004-1E	Dark	No	Edge (milled MDF)
16-004-1C	Dark	No	Clean (aluminum)
16-005-9C-M	Light	Yes	Clean (aluminum)
16-005-9E-M	Light	Yes	Edge (milled MDF)
16-005-9S-M	Light	Yes	Soft (PET felt)

ADDITIONAL INFORMATION

Weight	N/A
Dimensions	N/A
Color	Dark, Light
Motorized	No, Yes
Covers	Clean (aluminum), Edge (milled MDF), Soft (PET felt)

We reserve the right to introduce changes in the product specifications after the printing and publication of this document.

Visit www.smartmediasolutions.com for the most recent information.

SMS Smart Media Solutions AB
Högbergsgatan 26B, 116 20 STOCKHOLM